



Peter Zlonicky

Urban Design and Architecture Competition

Administration Complex in Tripoli

Recommendations

Tripoli, June 30, 2007

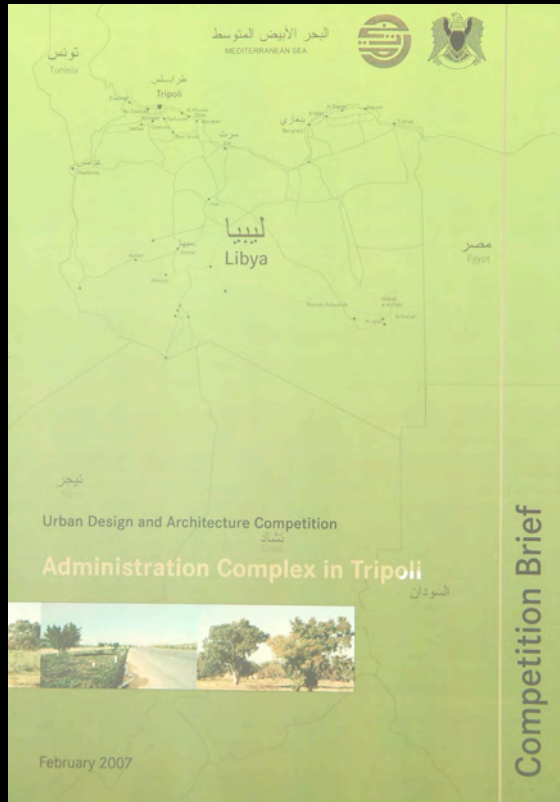
The Competition -

- a milestone in the history of Libya and Tripoli.
- a challenge for architects and urban planners.
- a tool to choose the best solutions.

What does a good competition need?

A good competition needs -

- an informative competition brief,
- a perfect preliminary examination,
- an independent international jury,
- excellent projects,
- reflexions and recommendations.



Administration Complex in Tripoli

The Competition Brief



Administration Complex in Tripoli

Excellent architects, urban planners,
landscape architects, traffic engineers
and innovative projects



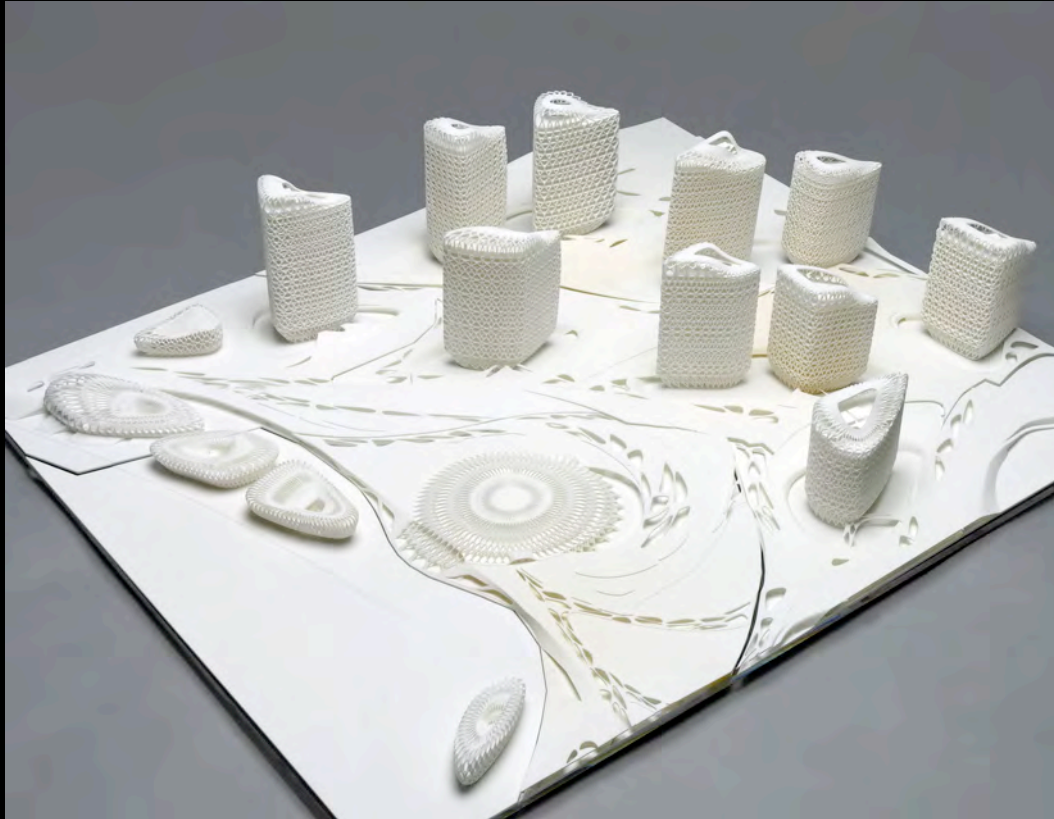
Administration Complex in Tripoli
A perfect preliminary examination



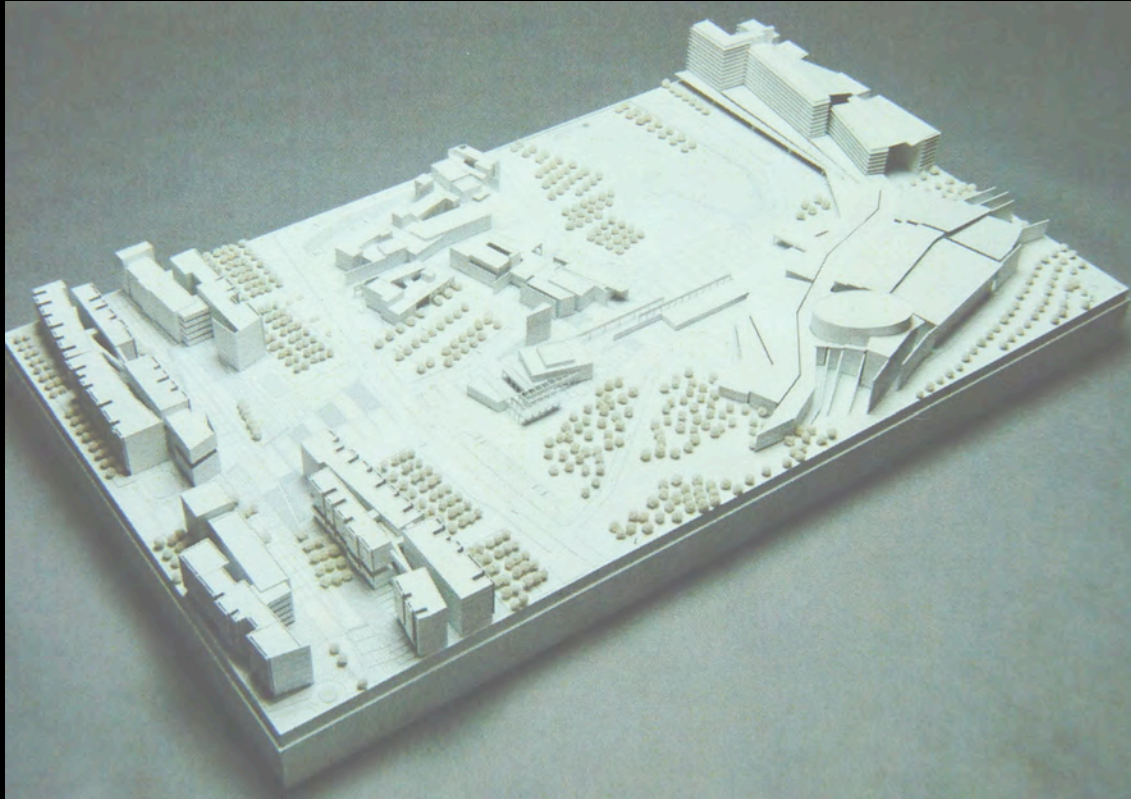
Administration Complex in Tripoli
An independent international jury decides.....



Administration Complex in Tripoli
Kisho Kurokawa, Tokyo, Japan



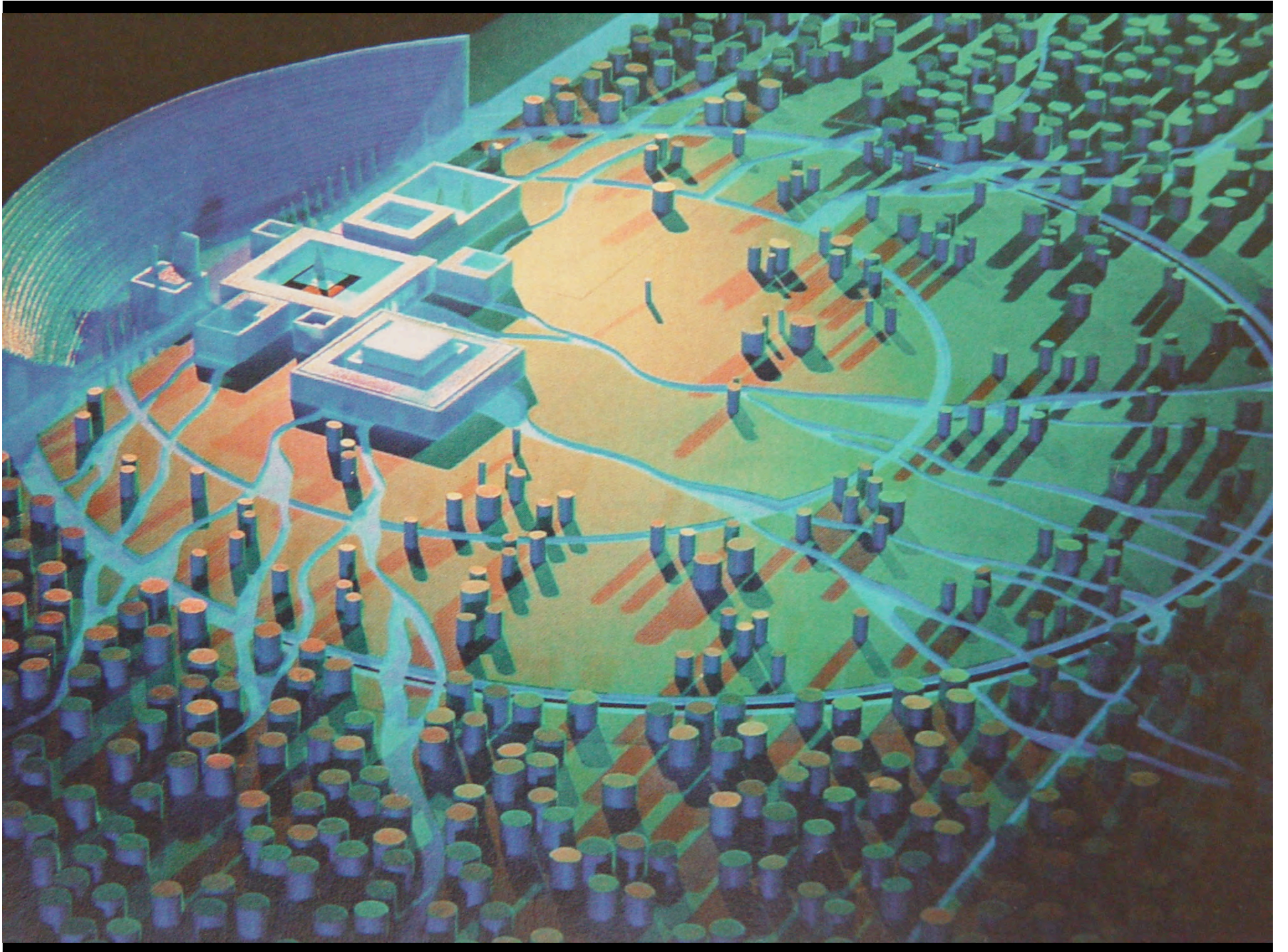
Administration Complex in Tripoli
Zaha Hadid, London

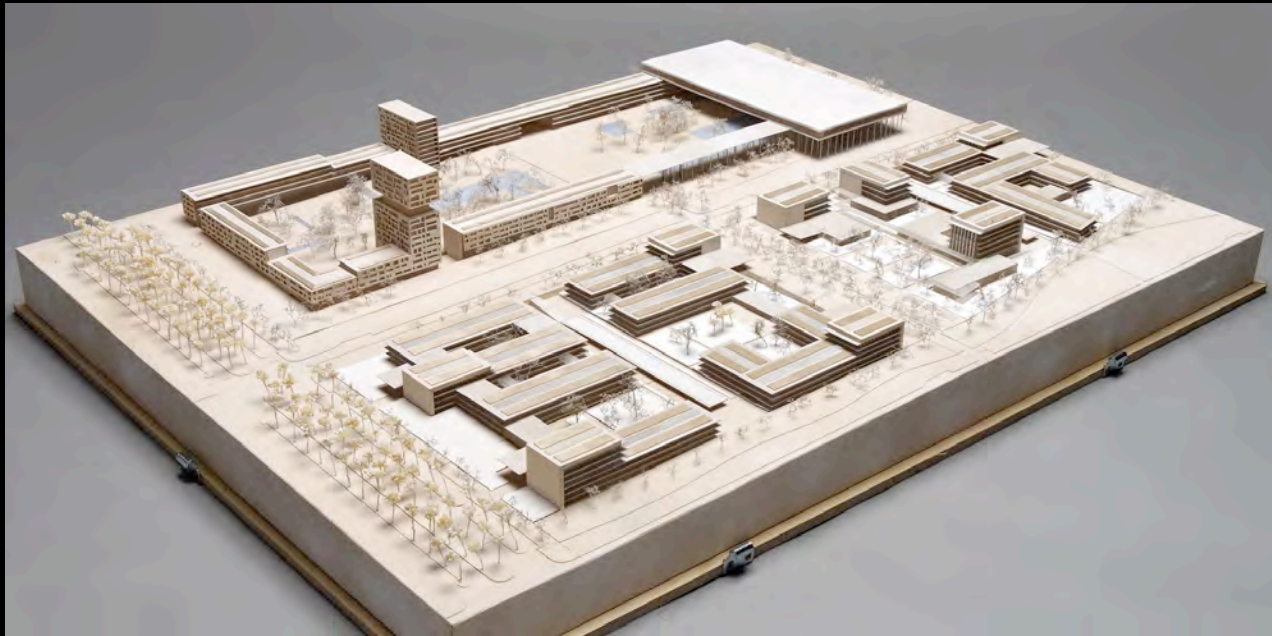


Administration Complex in Tripoli
Consolidated Consultants
Jafar Tukan, Amman, Jordan



Administration Complex in Tripoli
schultes frank architekten, Berlin





Administration Complex in Tripoli
4th Prize
Ateliers Lion, Paris, France

SITE PLAN

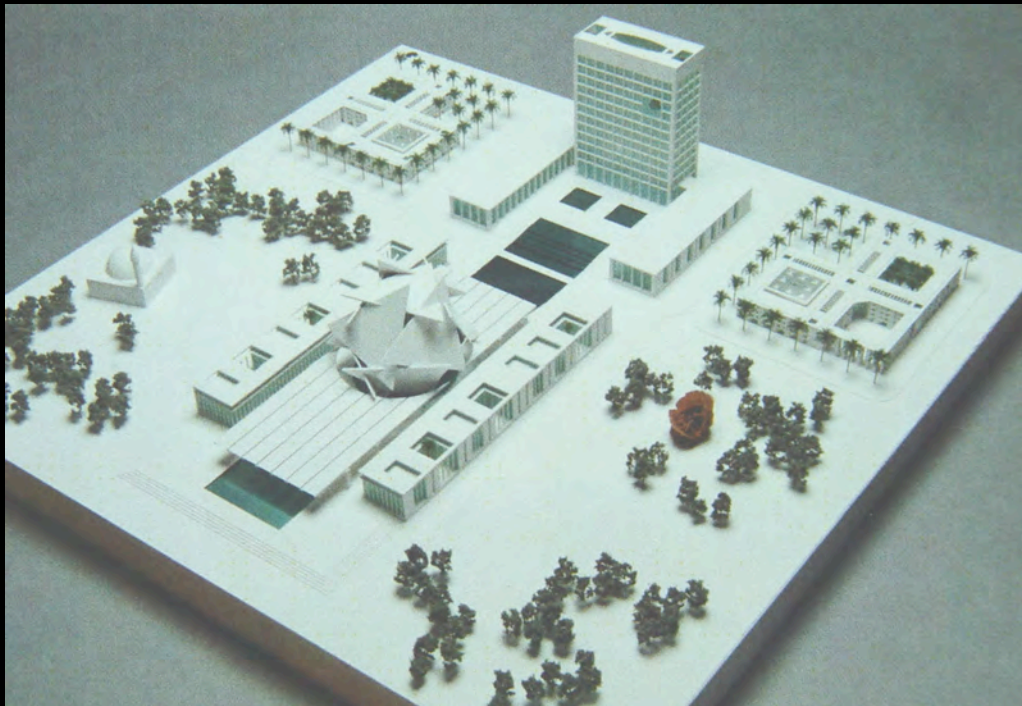


N

0 10 50 100 200

1:1000



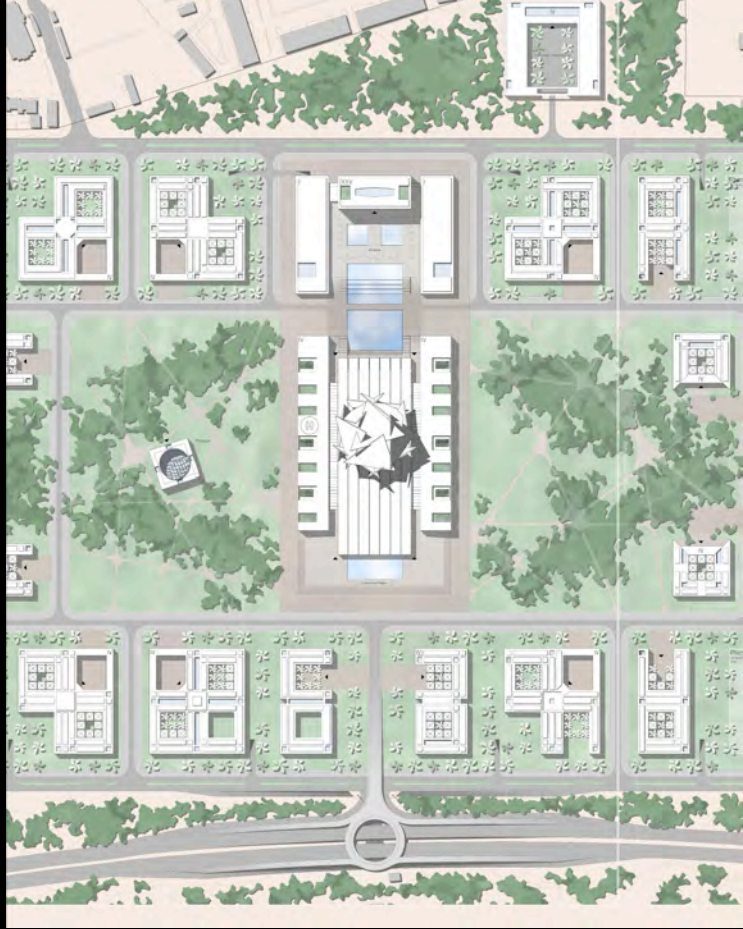


Administration Complex in Tripoli

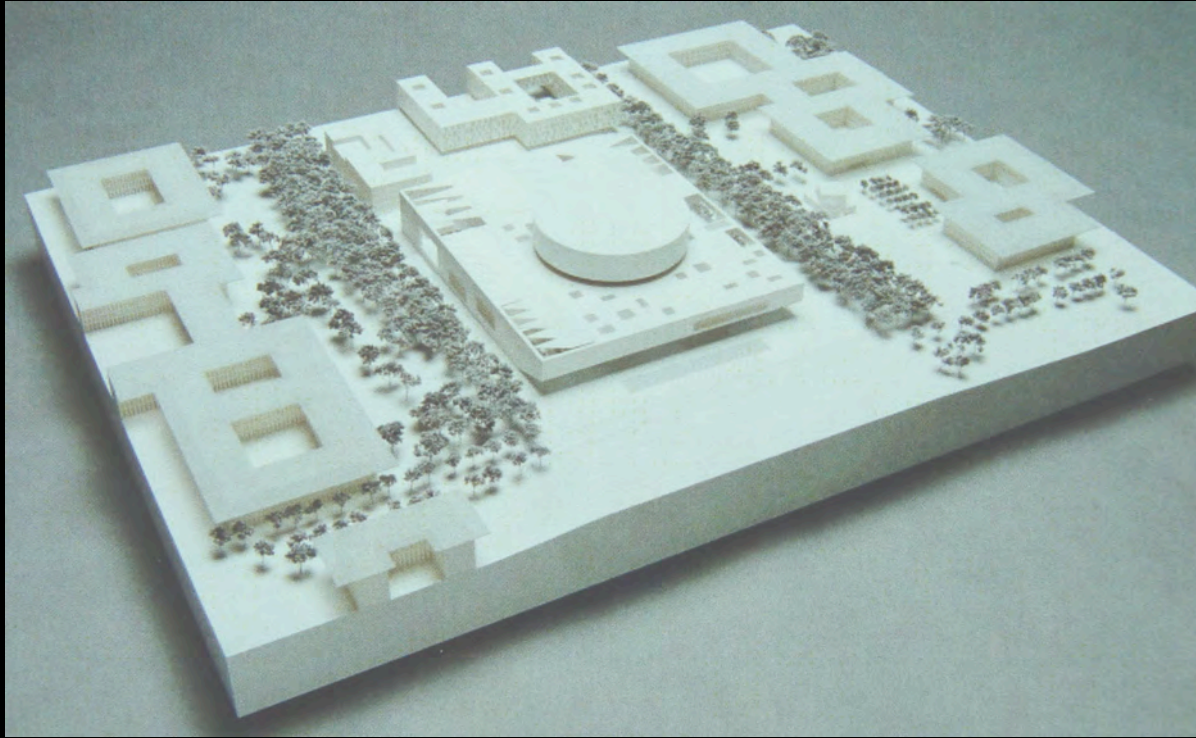
3rd Prize

von Gerkan Marg und Partner, Hamburg

Germany

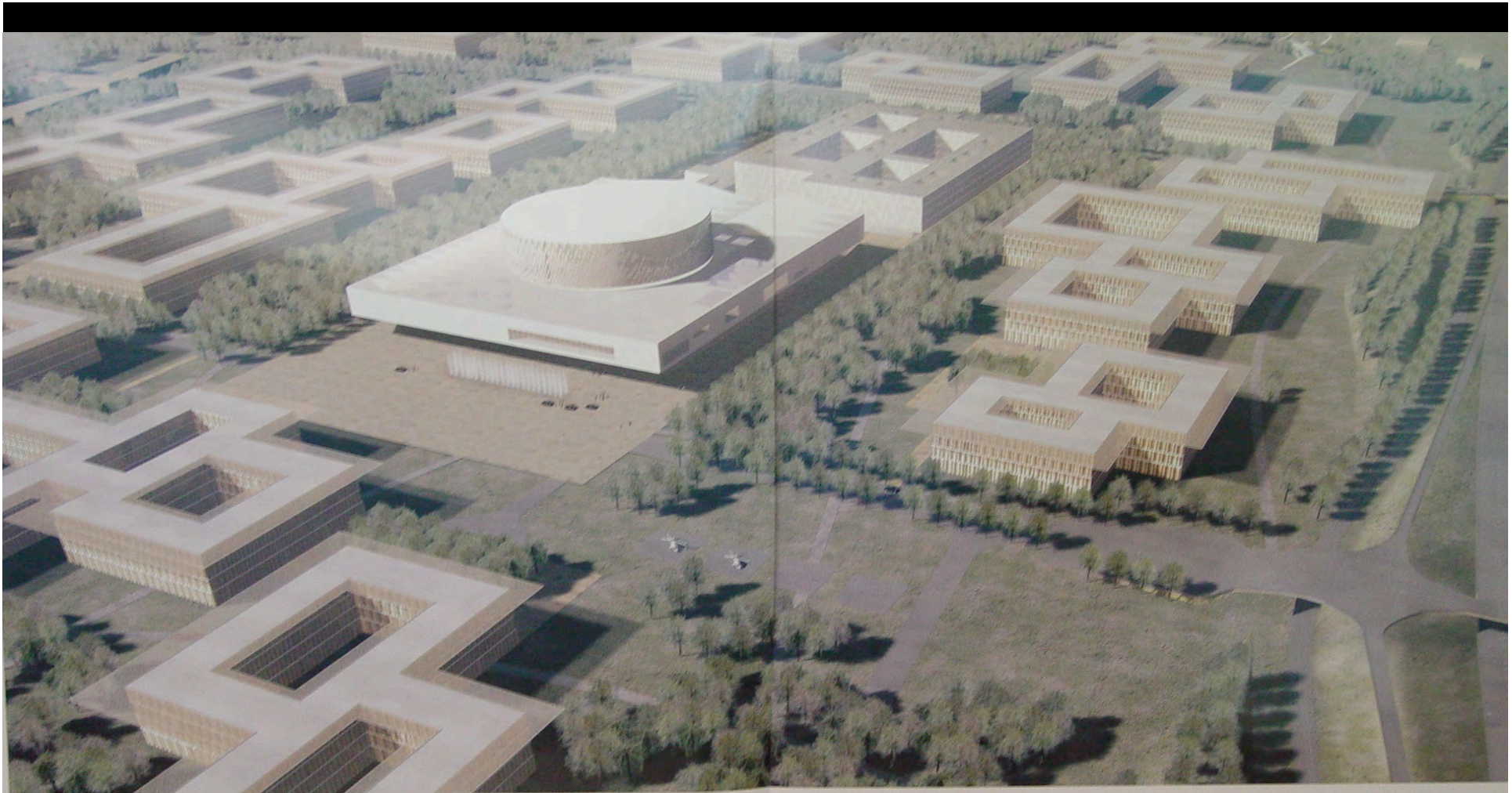






Administration Complex in Tripoli
2nd Prize

Burckhardt+Partner, Zurich, Switzerland



Urban Strategies

Central Landmark
 The central landmark is a large, circular building that serves as the focal point of the development. It is surrounded by a large, open plaza and is connected to the surrounding blocks by a network of walkways and roads.

Block Pattern
 The development is organized into a grid of rectangular blocks, each with its own internal courtyard. This pattern creates a sense of community and provides a variety of outdoor spaces for residents.

Single-Facade Building
 The buildings are designed with a single facade, which allows for a consistent architectural style and a sense of continuity throughout the development.



The Alleys

The alleys provide a network of pedestrian paths that connect the blocks and provide access to the central landmark and surrounding green spaces.



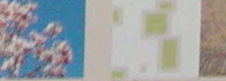
The Auxiliary Uses

The auxiliary uses include a variety of community facilities and services that enhance the quality of life for residents.



The Parks

The parks provide a variety of outdoor spaces for residents to enjoy and are an important part of the development's green infrastructure.



The Urban Plazas

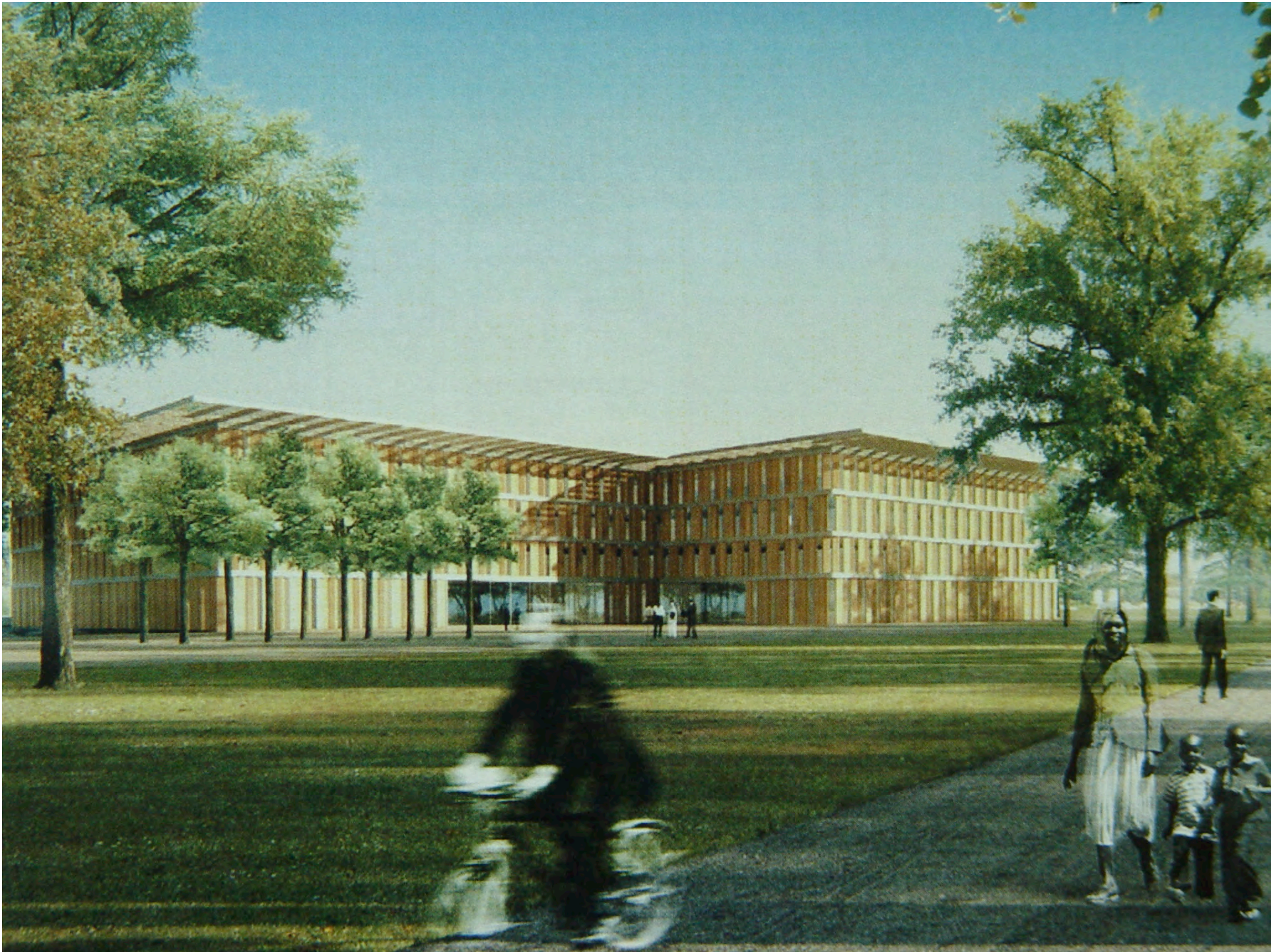
The urban plazas provide a network of pedestrian paths that connect the blocks and provide access to the central landmark and surrounding green spaces.



The Courts

The courts provide a network of pedestrian paths that connect the blocks and provide access to the central landmark and surrounding green spaces.







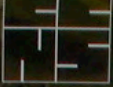
**Administration Complex in Tripoli
1st Prize**

Léon Wohlhage Wernik, Berlin, Germany











Administration Complex in Tripoli
Felicitations to all participants -
and good decisions for realization!



Administration Complex in Tripoli
shukran - ma*a as-salàma!